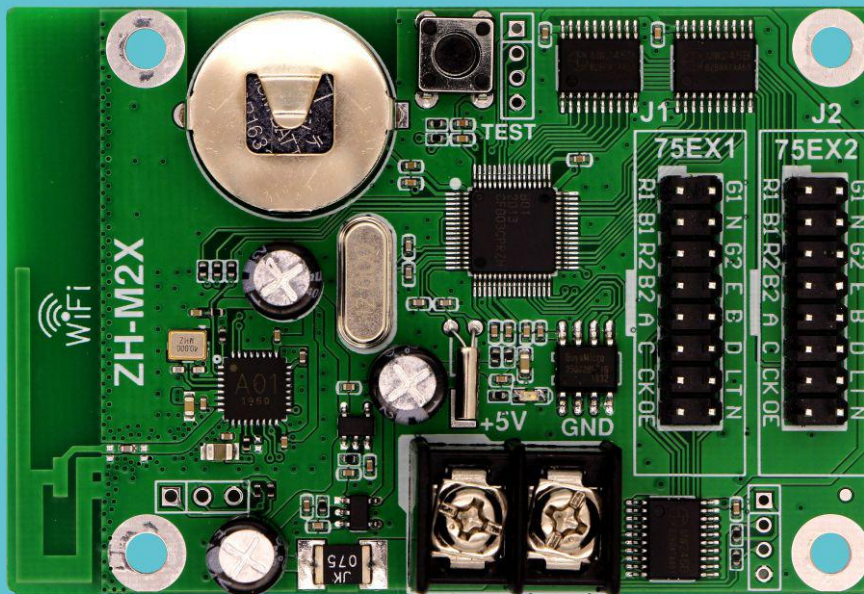




®  
ZH LED Control System



# ZH-M2X Product Specification





# ZH-M2X Specification

## I. Function Introduction:

1. **Multi-platform control:** Support PC, Android and IOS.
2. **Fast transmission rate:** Use HTTP protocol and data compression, data transmission is smaller and faster.
3. **Background transmission efficient:** Proprietary algorithm, small data size, higher efficiency.
4. **Simple operation:** Simple UI design, debugging and use do not affect each other, and zero learning cost.
5. **Multilayer overlay processing:** Background and foreground do not affect operational efficiency.
6. **WiFi communication:** Subtitle data can be transmitted through WiFi.
7. **Support various indoor and outdoor unit board:** HUB75E interface match with various kind of the unit board.
8. **Support module manufacturers' line type loading:** Support direct selection of module manufacturers' line type.
9. **Support module line type automatic scanning:** Line type automatic scanning.
10. **Support program timing play, fixed time play, designated time play:** The program can play at will.
11. **Support rainbow word, background, pictures and other materials:** Support all kinds of common materials.
12. **Support user password function:** In addition to WIFI password, the screen can be encrypted twice, which is more secure to use.
13. **Support special chips:** Such as ICN2038S.

## II. Detail Parameters

<b>Operating system:</b> <b>PC device support:</b> XP, Win7, Win8 and Win10. <b>Mobile terminal support:</b> Android(Android), IOS.
<b>Display effect:</b> support software dynamic background, magic run side overlay play.
<b>Running type:</b> phantom running, support the whole screen running/multi partition running/custom running.
<b>Play type:</b> support multi-program sequential play/timing play/fixed-length play/time-sharing play/lock single program play.
<b>Adaptive range:</b> support various 75E interface unit board.
<b>Supporting software</b> <b>PC side :</b> LED player V5 <b>Mobile terminal:</b> LED Mobile (color), support multi-program editing/multi-area display/multi-language version.
<b>Area type:</b> subtitle/time/analog dial/temperature.
<b>Communication mode:</b> WIFI, stable speed.
<b>Sensor:</b> None



## ZH LED Display Control System

**Clock:** support multinational clock play, support jet lag settings.

**Working voltage:** + 4.5v ~6V

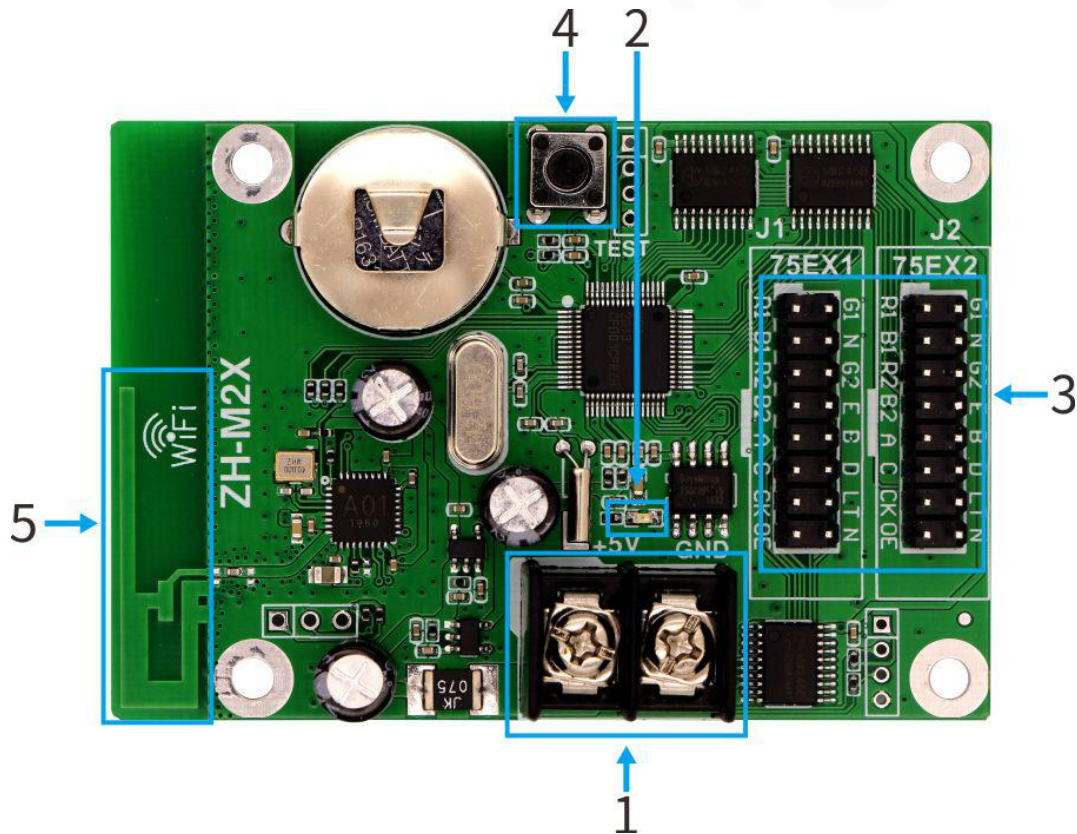
**Maximum power consumption:** <1W

**Operating temperature:** -30°C~70°C

### III. Loading Area

Model	HUB Port	Loading Area	Storage
ZH-M2X	2*hub 75E	384*64 192*128 max width: 512; max height: 128	4M

### IV. Hardware Introduction



#### A. Interface Function

NO.	Name:	Function:	Note:
1	Power input	Link DC5V power,offer power to card	
2	Power indicator	Power state	Red color always light
3	HUB75E port	75E data port	
4	Test button	Check WIFI SSID and test mode	



5	WIFI antenna	Offer WIFI signal	
---	--------------	-------------------	--

### B. Indicator:

Power indicator: constant light indicates power supply;

### C. HUB75E:

Data signal				Scan signal		Control signal	
GD1	Blank	GD2	E	B	D	LAT	GND
2	4	6	8	10	12	14	16
1	3	5	7	9	11	13	15
RD1	BD1	RD2	BD2	A	C	CLK	OE
Data signal				Scan signal		Control signal	

Note: HUB75 interface with scanning E signal, support 32 scanning display screen.

## V. Hardware Diagram:

Unit: mm

